

Rhino

Equipment weight cart with sit-to-stand adjustment



Ergonomic

Simple lightweight design for easy sit to stand adjustment



Smooth and easy to clean surfaces

To aid quicker and easier cleaning



Multi purpose

Easy integration in a variety of applications
(choice of laptop or VESA mount)



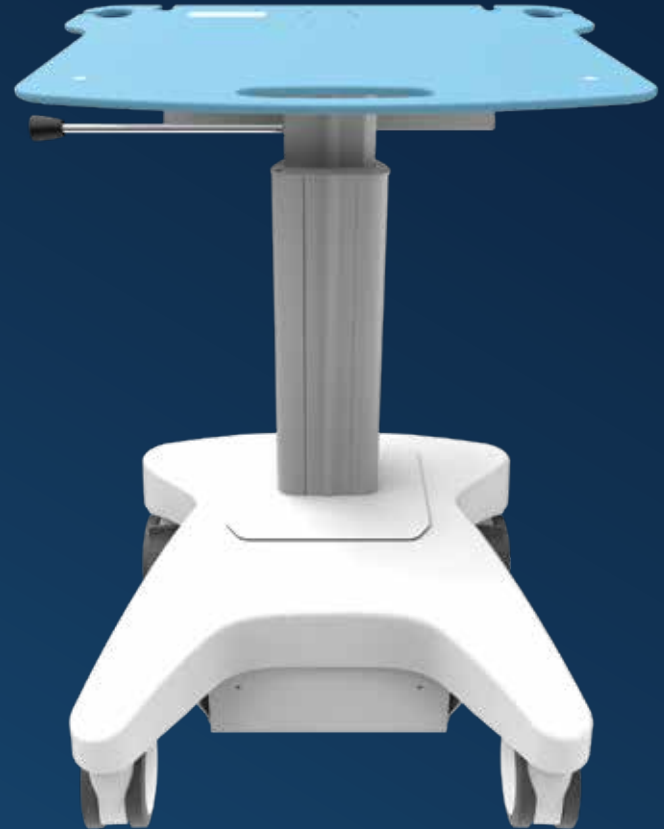
Durable

Lifetime Warranty

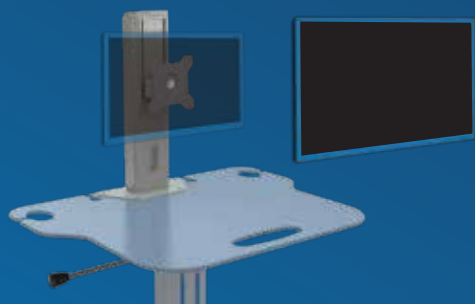


Quick setup

Supplied fully assembled with minimal packaging



Configuration options



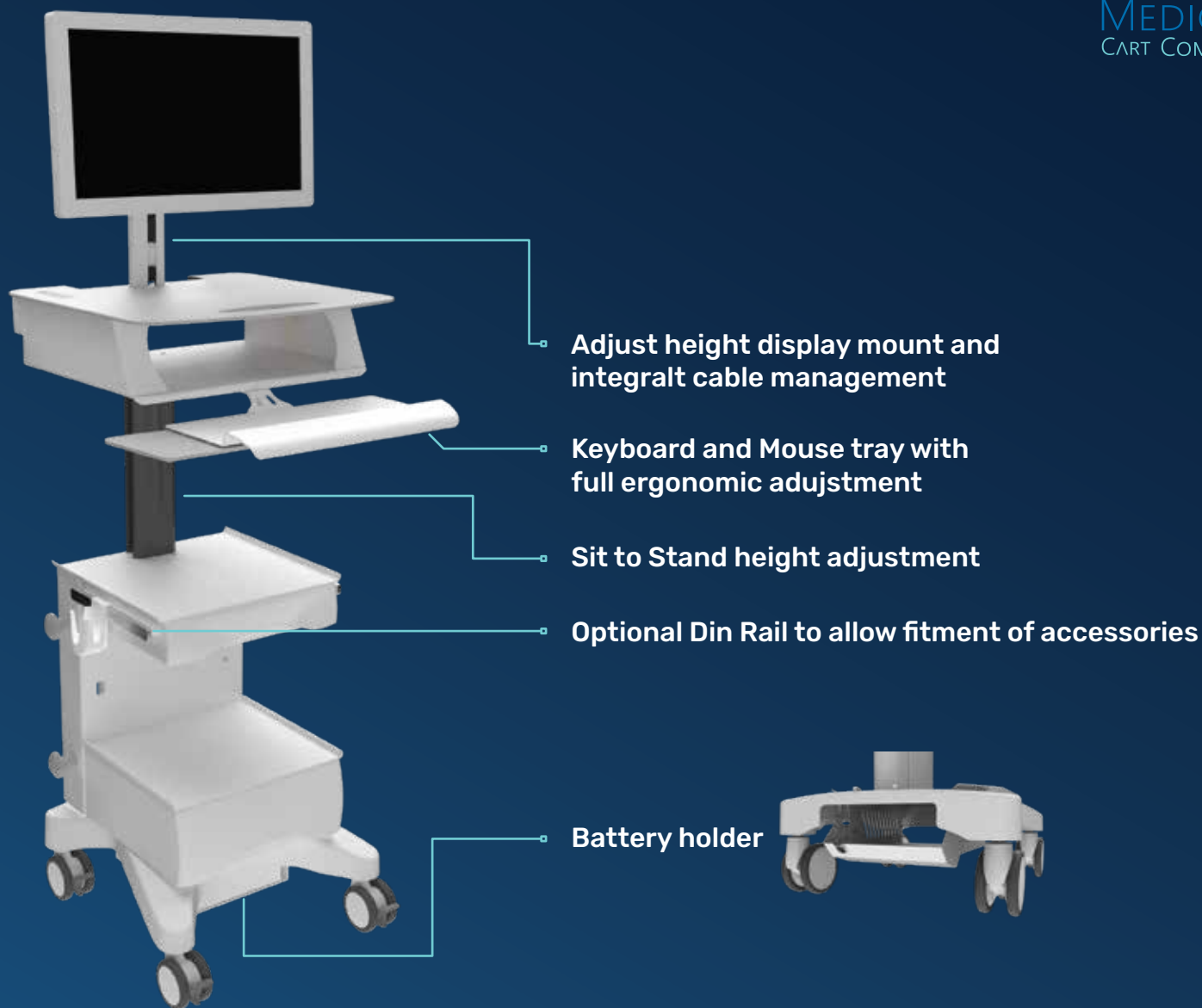
Display mount upto 24" Display



Tablet mount 9 to 11" Tablets



Laptop mount security mount 12-19"



Mounting options



Display Mount
DM1



Laptop Mount
LM1



Tablet Mount
TM1



Camera Mount
CM1

Keyboard options



2nd Worksurface
2WS4, 2WS5



Keyboard Tray
KB1

Din Rail options



Side Din Rail Kit
DR1



Scanner holder
SH1



Scanner holder
SH2



Mouse holder
MH1



Gel holder
GH1, GH2

Drawer options



Drawer



Medical Drawer



Pharmacy

Storage options



Basket S
ST1



Basket L
ST2

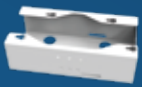


Cabel holder
ST4



Shelf
S2, S3

Cabel, Tube and PSU holder options



PSU holder
PSH1



Hook
CH1

Wheels options



Antistatic options
125mm wheel

Wheels options



Achrily



Aluminium

Mechanical data

Height adujstment rate	Sit 795mm, stand 1033mm 300x50mm height adjustment
Worksurface	557x638mm
Wheelbase dimension	749mm (diameter)
Wheel construction	Polyamide with Polyurethane tread
Wheels/locking	4 locking, 125mm diameter
Weight of a cart	21 kg
Loading capacity	60 kg

Construction

Main assembly	Aluminum
Worksurface	Cast acrylic

Color

RAL 9016	
Cutom color	

Mounting options

Display mount VESA 75/100
Laptop (secure) 12-19"
Tablet 9-11"
Camera Mount

Certificates

Certificates conforms to	IEC60601-1:2012 (Edition 3)
CE	Rohs compliant

Technical characteristics

- Fully recycable
- Lifetime Warranty
- Optional keyboard and mouse tray
- AC power pack option
- Large range of accessories
- Made in Hungary

